

Panorama

If you move to another window, the panorama image automatically switches to the one to match the landscape viewed from the closest window to you. You can see the information on the building or mountain by pressing its number pin on the screen.

You can switch the screen to the Night scenery mode by pressing the Moon mark [>] .



Night scenery mode

Observatory Audio Guidance

Various audio guidance is available.

Tokyo Panorama Guide

Describes the landscape viewed from the windows of the Observatories. The contents switch according to the window you stand nearby.



Brief Overview of Tokyo

Describes what type of city Tokyo is.

What You Can Do with Ubiquitous Communicator!

home page *This is the first screen for all menus.



Sleep button

Status icons

- Multi-receiver connection status
- Remaining battery level
- Radio wave condition

Touch panel

Home button

* You can return to home page from anywhere by pressing this button.

ON/OFF

Use the audio guidance

Various audio guidance is available.

Read a map

Displays the current location or navigation screen.

See the information on the nearby area

Automatically displays the information of the nearby sights, shops, etc.

Search shops and facilities

Searches shops and facilities by category. The search result will be arranged and displayed in order of distance with the closest shop or facility first. Train situation and weather forecast are also available.

Use the route guidance

If you find the shop and facility to go, press the SET TO THE DESTINATION button. It will guide you there with audio and images. If "Terminal Return Point" is selected, it will guide you to where you received the terminal.

Change the language setting

Display the solutions to the FAQ (Frequently Asked Question)

Service Hours of the Tokyo Metropolitan Government Building

Observatories

9:30am - 11:00pm (Admission: before 10:30pm)
 *South Observatory: 9:30am - 5:30pm (When North Observatory is closed, open till 11:00pm.)
 Admission: Free of charge
 *Closed: South Observatory: The first and third Tuesdays
 North Observatory: The second and fourth Mondays
 *If a national holiday falls on an Observatory's regular closing day, the Observatory is closed on the following day.
 *During the year-end and New Year holidays (December 29 - 31, January 2 - 3)

Tokyo Metropolitan Assembly Building

Open: 9:00am - 5:00pm Weekdays (Closed: Saturday, Sunday, national holidays, and during the year-end and New Year holidays)

NOTE

- ① Please return your Ubiquitous Communicator to where you received it.
- ② Ubiquitous Communicator is a precision equipment. Please handle it carefully.
- ③ Ubiquitous Communicator can be continuously used for approx. 4 hours.
- ④ Ubiquitous Communicator is not water proof. Please keep it away from any liquids.
- ⑤ A person with cardiac pacemaker needs to keep the multi-receiver at least 22 cm away from it.
- ⑥ Watch out for your surroundings when walking around with Ubiquitous Communicator.

Tokyo Ubiquitous Technology Project

Free Rental

Ubiquitous Communicator guides you around Ginza and the Tokyo Metropolitan Government Building!



Enjoy Ginza / the Tokyo Metropolitan Government Building with audio guidance!

Searches shops in Ginza / Shinjuku!

Guides you to your destination!

Automatically displays the information on the nearby area!

Multilingual setting [Japanese, English, simplified Chinese, Chinese, and Korean]

<http://www.tokyo-ubinavi.jp/>

TOKYO METROPOLITAN GOVERNMENT 東京都

国土交通省 Ministry of Land, Infrastructure and Transport

Cooperation: Ginza Association

This screen appears when you arrive at the Tokyo Metropolitan Government Building. Please select either of them and proceed according to the instructions.

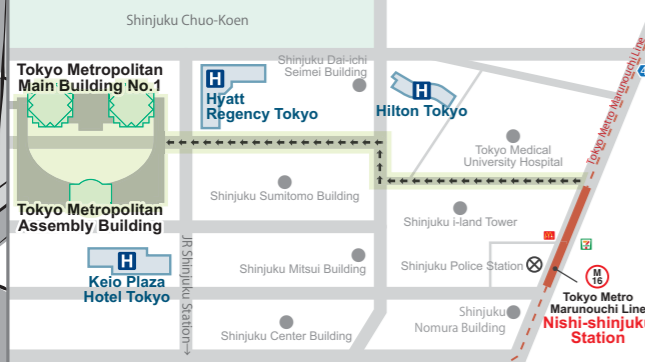


A tour of the Metropolitan Assembly rooms (Weekdays only)

A tour to guide in the No. 15 Committee Room and chamber in the Tokyo Metropolitan Assembly Building, and explain the Tokyo Metropolitan Assembly



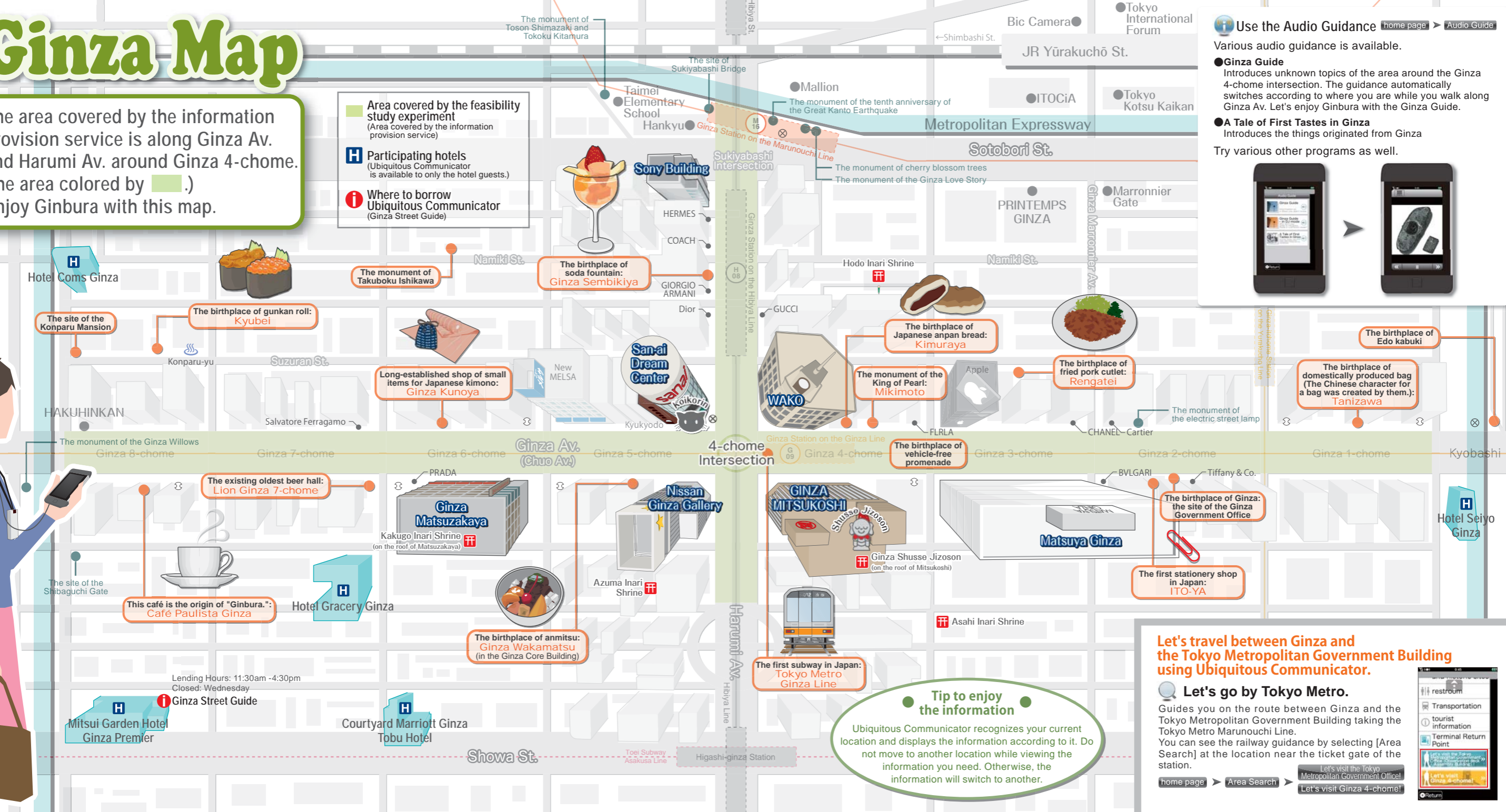
Area covered by the feasibility study experiment (Area covered by the information provision service) Participating Hotels



Ginza Map

The area covered by the information provision service is along Ginza Av. and Harumi Av. around Ginza 4-chome. (the area colored by .)
Enjoy Ginbura with this map.

- Area covered by the feasibility study experiment
(Area covered by the information provision service)
- H Participating hotels
(Ubiquitous Communicator is available to only the hotel guests.)
- i Where to borrow Ubiquitous Communicator
(Ginza Street Guide)



Use the Audio Guidance [home page](#) ▶ [Audio Guide](#)

Various audio guidance is available.

- **Ginza Guide**
Introduces unknown topics of the area around the Ginza 4-chome intersection. The guidance automatically switches according to where you are while you walk along Ginza Av. Let's enjoy Ginbura with the Ginza Guide.
- **A Tale of First Tastes in Ginza**
Introduces the things originated from Ginza. Try various other programs as well.

Tip to enjoy the information

Ubiquitous Communicator recognizes your current location and displays the information according to it. Do not move to another location while viewing the information you need. Otherwise, the information will switch to another.

Let's travel between Ginza and the Tokyo Metropolitan Government Building using Ubiquitous Communicator.

Let's go by Tokyo Metro.

Guides you on the route between Ginza and the Tokyo Metropolitan Government Building taking the Tokyo Metro Marunouchi Line. You can see the railway guidance by selecting [Area Search] at the location near the ticket gate of the station.

[home page](#) ▶ [Area Search](#) ▶ [Let's visit the Tokyo Metropolitan Government Office!](#) ▶ [Let's visit Ginza 4-chome!](#)

Lending Hours: 11:30am -4:30pm
Closed: Wednesday

- H Mitsui Garden Hotel Ginza Premier
- i Ginza Street Guide
- H Courtyard Marriott Ginza Tobu Hotel

The existing oldest beer hall: Lion Ginza 7-chome

This café is the origin of "Ginbura.": Café Paulista Ginza

Ginza Matsuzakaya
Kakugo Inari Shrine (on the roof of Matsuzakaya)

The birthplace of anmitsu: Ginza Wakamatsu
(in the Ginza Core Building)

Nissan Ginza Gallery
Azuma Inari Shrine

GINZA MITSUKOSHI
Ginza Shusse Jizoson (on the roof of Mitsukoshi)

The first subway in Japan: Tokyo Metro Ginza Line

Matsuya Ginza
The birthplace of Ginza: the site of the Tokyo Metropolitan Government Office

ITO-YA
The first stationery shop in Japan

The birthplace of Edo kabuki

The birthplace of domestically produced bag (The Chinese character for a bag was created by them.): Tanizawa

The site of the Konparu Mansion

The birthplace of gunkan roll: Kyubei

The monument of Takuboku Ishikawa

Long-established shop of small items for Japanese kimono: Ginza Kunoya

The birthplace of soda fountain: Ginza Sembikiya

The birthplace of Japanese anpan bread: Kimuraya

The monument of the King of Pearl: Mikimoto

The birthplace of fried pork cutlet: Rengatei

The birthplace of Edo kabuki

The birthplace of domestically produced bag (The Chinese character for a bag was created by them.): Tanizawa